



Gordon Road | | Cowes | PO31 7SL

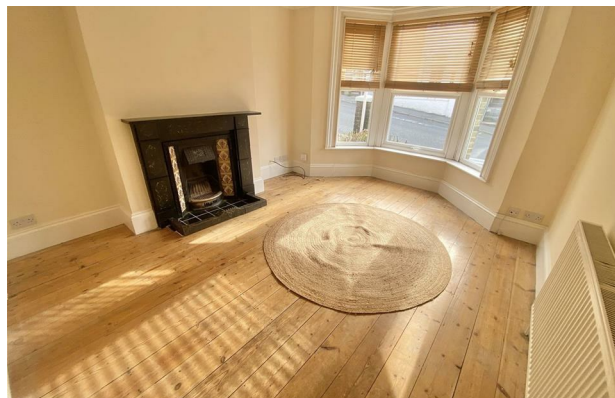
£1,200 PCM



Gordon Road |
Cowes | PO31 7SL
£1,200 PCM

AVAILABLE NOW!! Is this delightful semi-detached house located in the heart of Cowes. The property consists of two reception rooms, modern-fitted kitchen with integrated oven. You also have a separate WC on the ground floor. On the first floor there are three good-sized bedrooms and a family bathroom with bedroom one benefiting from a en-suite. This property also benefits from a generously sized rear garden and is within short walking distance to the town centre and travel links. PLEASE CONTACT US FOR A VIDEO TOUR!

- AVAILABLE NOW
- SEMI-DETACHED HOUSE
- 3 BEDROOMS
- EN-SUITE
- 2 RECEPTION ROOMS
- ENCLOSED REAR GARDEN
- CLOSE TO TOWN



Energy Efficiency Rating		
	Current	Potential
Very energy efficient - lower running costs		
(92 plus) A		
(81-91) B		
(69-80) C		
(55-68) D		
(39-54) E		
(21-38) F		
(1-20) G		
Not energy efficient - higher running costs		
England & Wales		EU Directive 2002/91/EC

Council Tax Band
EPC Rating

3 Langely Court Pyle Street
Newport
Isle of Wight
PO30 1LA
01983 521212

enquiries@redsquirrelpropertyshop.co.uk
www.redsquirrelpropertyshop.co.uk